

20

GOSFORD
REGIONAL
GALLERY

0

20

exhibition
program

5

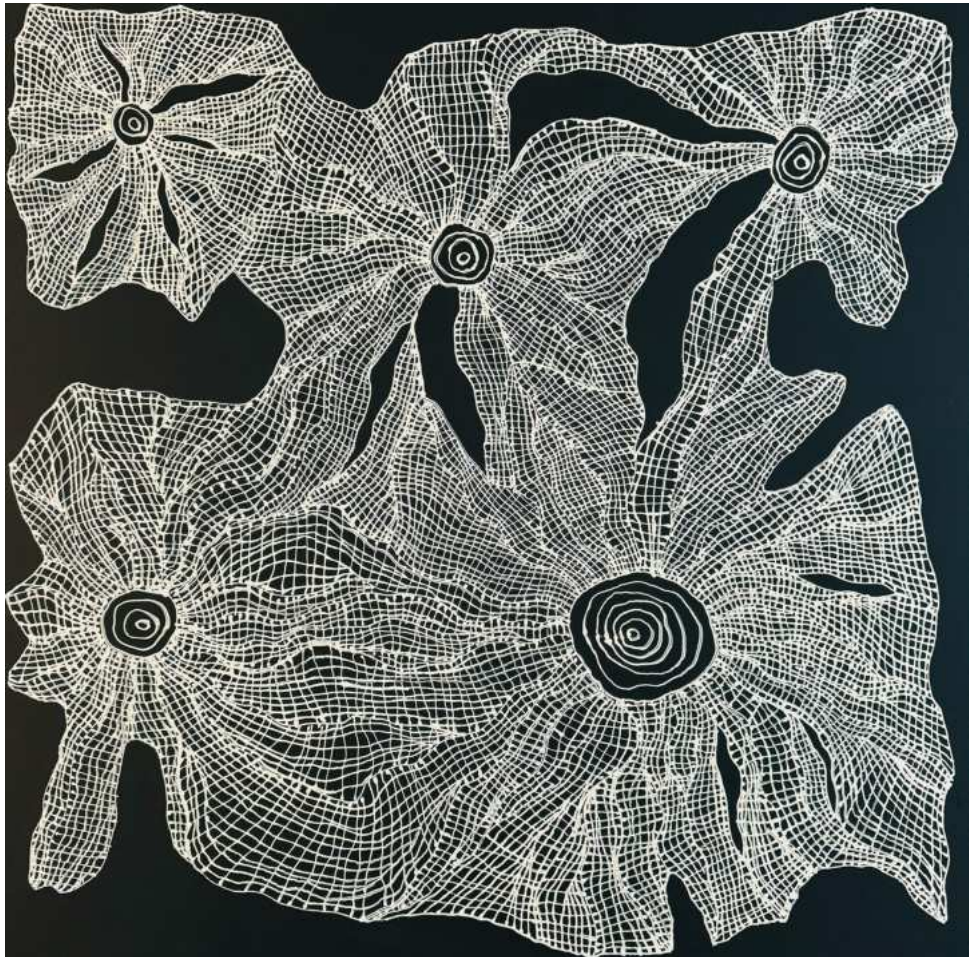


Image: Ethan-james Kotiau *Gurba - Fishing Net 2024*, Acrylic on canvas, courtesy of the artist

We acknowledge the Traditional Custodians of the land on which we live, work and play.

We pay our respects to Darkinjung Country, and Elders past and present. We recognise the continued connection to these lands and waterways and extend this acknowledgement to the homelands and stories of those who also call this place home.

We recognise our future leaders and the shared responsibility to care for and protect our place and people.

Welcome

2025 will be an amazing year for the Gallery as we celebrate a quarter of a century. Over the past 25 years the Gallery has held almost 500 exhibitions presenting artwork created by thousands of artists from all over the world. 2025 will be no exception as we move forward with strong exhibitions, dedicated community programming, education for all ages and exciting future directions.

The exhibitions chosen this year include many highlights, starting with *Zoonoses*, in which Dr Nicola Hooper uses fairy tales, myths and rhymes as a metaphor to discuss Zoonotic outbreaks. In February we are fortunate to be hosting *Art in Conflict*, a major touring exhibition of contemporary art from the collection of the Australian War Memorial.

To mark the occasion of our twenty-fifth anniversary we are curating the exhibition *25 Moments*. This exhibition, opening in April, will include highlights from the nearly 500 exhibitions held at the Gallery since it opened in April 2000. Including outstanding local talent and artists from around the country, *25 Moments* will present a mix of work previously exhibited at the gallery, new artworks and works commissioned specifically for this exhibition.



Image: Wolfe Wise Creative, 2024

In late June we will present the eleventh iteration of *Emerging*, our biennial prize for artists aged under thirty. This exhibition, which has helped launched many careers, allows artists to develop and exhibit a considered body of work or installation.

The annual *Gosford Art Prize*, which has been a cornerstone of the arts on the Central Coast since 1970, has undergone a revamp this year. The main prize jumps to \$25,000 and there is a significant increase to all other prize categories. The addition of a new Moving Image Art Award will see the prize continue to expand and flourish.

Another transformation in 2025 will be the establishment of our new moving image art gallery. This dedicated space will be inaugurated with a specially commissioned work by artist John Power, *Wander and Dwell*, a real-time generative digital artwork that responds to the natural and urban environment of the Central Coast. This work will be followed by the Moving Image Art Award as part of the Gosford Art Prize in September and in November, a specially commissioned piece on the work of local identity Father Rod Bower by artist Todd Fuller.

Rounding out an amazing year we are pleased to have again been selected to host the *Archibald Prize 2025*. This celebrated competition and exhibition has impressed audiences for over 100 years and the 2025 exhibition is bound to inspire artists and delight audiences once again.

Complementing our strong array of exhibitions, we are committed to delivering engaging public programs. We are excited to be working with First Nations Artist Ethan-james Kotiau on an artist-in-residence program with local schools. In 2025 we aim to deliver exciting artisan markets highlighting the talented makers and creators of the Central Coast. We will continue to run Studio Gossie, free Saturday morning guided tours, weekly art classes, school holiday workshops, artist talks and an array of after-hours events.

We look forward to welcoming you in 2025.

Tim Braham
Director
Gosford Regional Gallery

Celebrating Creativity Engaging Community Promoting Culture

25 YEARS



Image: Gosford Regional Gallery *Dobell Drawing Prize 2022*, courtesy of Gunther Hang

2025 Artistic Program

Exhibition	Duration
Zoonoses Dr Nicola Hooper	2 November 2024 - 2 February 2025
The Crane and the Kookaburra Tomoko Oka	6 December 2024 - 28 January 2025
Surrounded by Time with a Canary in a Coalmine Tania Mason	1 February - 23 February 2025
Art in Conflict	15 February - 23 March 2025
Dandhi - Grounded Ethan-james Kotiau	15 February - 23 March 2025
A Central Vision 2025	1 March - 23 March 2025
25 Moments	12 April - 15 June 2025
Wander and Dwell Dr John Power	12 April - 29 August 2025
Emerging 2025	28 June - 24 August 2025
Temporal Echoes from Surreal Landscapes Aksara Harriram	4 July - 27 July 2025
Gosford Art Prize 2025	6 September - 9 November 2025
Dear Christians Todd Fuller	15 November 2025 - 28 February 2026
Archibald Prize 2025	22 November - 31 December 2025



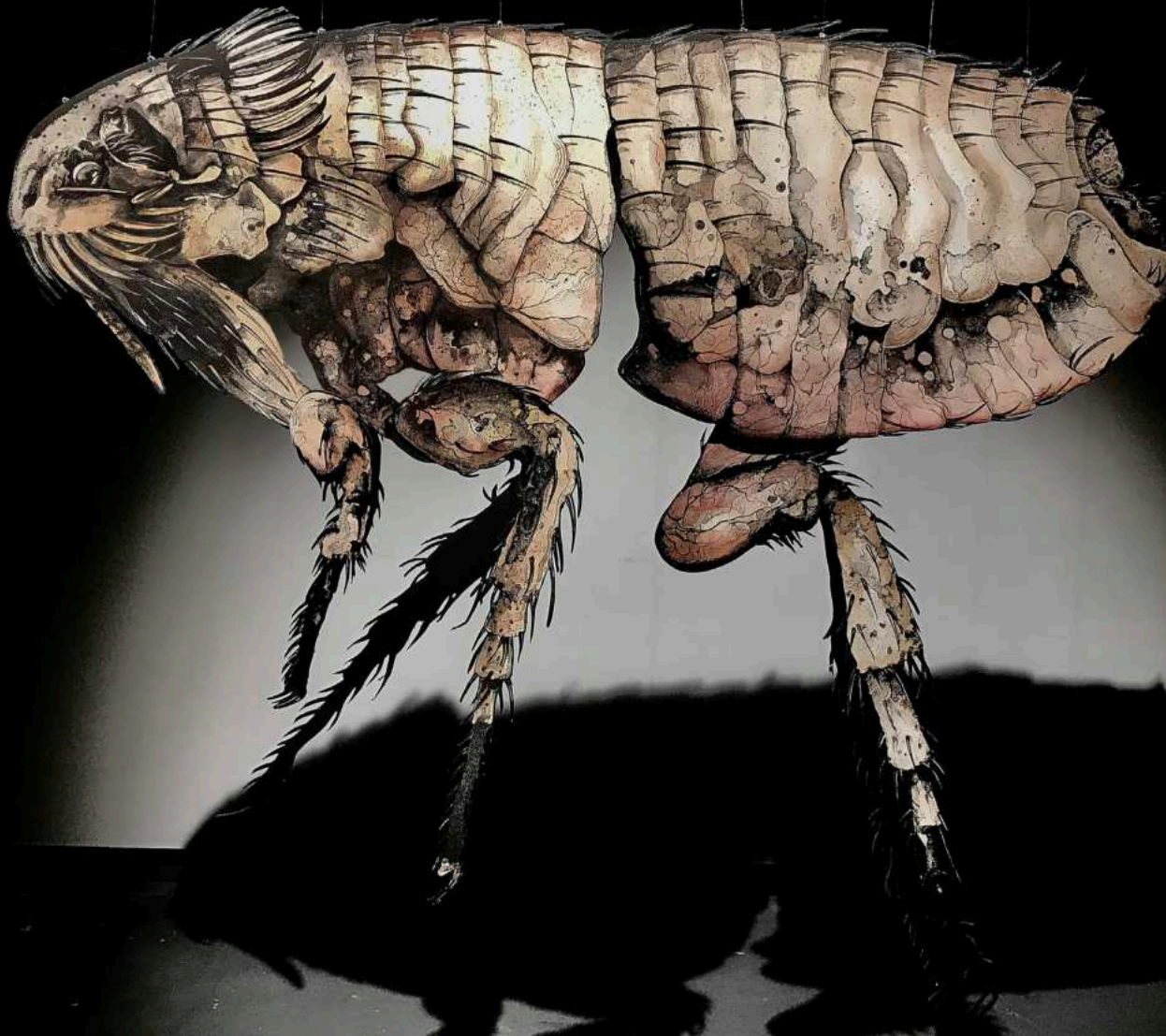
Please RSVP via Trybooking link
for all opening events
www.trybooking.com/CLCUF

Zoonoses

DR NICOLA HOOPER

Through drawing and lithography, Nicola Hooper uses fairy-tale iconology and rhymes to explore concepts surrounding zoonoses (animal diseases that can infect humans). The exhibition *ZOONOSES* explores how we perceive certain animals in the context of fear and disease.

A Museums & Galleries Queensland touring exhibition of works by Dr Nicola Hooper presented by Logan Art Gallery, Logan City Council, in partnership with Museums & Galleries Queensland. This project has been assisted by the Australian Government's Visions of Australia program, and is supported by the Queensland Government through Arts Queensland, part of the Department of Communities, Housing and Digital Economy. Proudly sponsored by Haymes Paint.



The Crane and the Kookaburra

TOMOKO OKA



Japanese artist and Central Coast resident Tomoko Oka tells a story with this series of Sumi-e (Japanese ink art) paintings.

The collection is an accessible, light-hearted exploration of the frustrations and joys of experiencing another culture - in this case, the Australian kookaburra experiencing Japanese culture, and a crane fascinated by Australia.

We are invited to reflect on our own interaction with other cultures, and how meeting people from other nations can open our eyes to the interest and beauty we can find in what is foreign to us.

Image: Tomoko Oka *Greeted Enormously, Magnificently*, 2024. Ink on paper, courtesy of the artist

6 DECEMBER 2024 - 28 JANUARY 2025
OPENING THURSDAY 5 DECEMBER, 6PM

Surrounded by Time with a Canary in a Coal Mine

TANIA MASON



The exhibition *Surrounded by Time with a Canary in a Coal Mine*, aims to capture the fragility of our environment and the urgency of conservation. By juxtaposing historical illustrations of endangered species with their current plight, the objective is to create a poignant narrative that evokes both nostalgia and concern.

All works are sitting on shelves as repositories of memory that add depth, suggesting that these once-vibrant beings could become mere relics of the past. The title references the canary's role as an early warning signal, reinforcing the idea that the loss of biodiversity is a call to action for us all.

This exhibition not only honours the beauty of these creatures but also serves as a rallying cry to protect them. It prompts viewers to reflect on their responsibility in preserving the natural world, transforming admiration into action.

Image: Tania Mason *A Dinner Plate of History*, 2024. Watercolour, gouache and acrylic on canvas, courtesy of the artist

1 FEBRUARY - 23 FEBRUARY 2025
OPENING FRIDAY 31 JANUARY, 6PM

GOSFORD
REGIONAL
GALLERY

ART IN CONFLICT



Image: Susan Wanji Wanji
Bombing of Darwin, 2016, ochre on linen, AWM2016.251.1
Image courtesy of the Australian War Memorial

Art in Conflict is a touring exhibition of contemporary art from the Australian War Memorial. With widespread acclaim and more than 50,000 people visiting since the tour opening at Shepparton Art Museum in 2022, the exhibition tour has been extended to tour extensively across Australia.

A showcase of responses to war, the exhibition includes more than 70 paintings, drawings, films, prints, photography and sculptures. Leading Australian artists are represented, such as Khadim Ali, Rushdi Anwar, eX de Medici, Denise Green, Richard Lewer, Mike Parr, and Ben Quilty. Aboriginal and Torres Strait Islander art is featured, with works by Tony Albert, Paddy Bedford, Robert Campbell Jr, Michael Cook, Shirley Macnamara, and Betty Muffler.

Three major new bodies of work debut in this exhibition: official war art commissions by Susan Norrie (*Iraq*, 2016) and Megan Cope (*Middle East*, 2017), and a commemorative work by Angelica Mesiti.

Contemporary artists' responses to conflict bring to light untold stories, reveal neglected histories and deepen our understanding of Australia's experience of conflict, both past and present.

This project has been assisted by the Australian Government's Visions of Australia program.

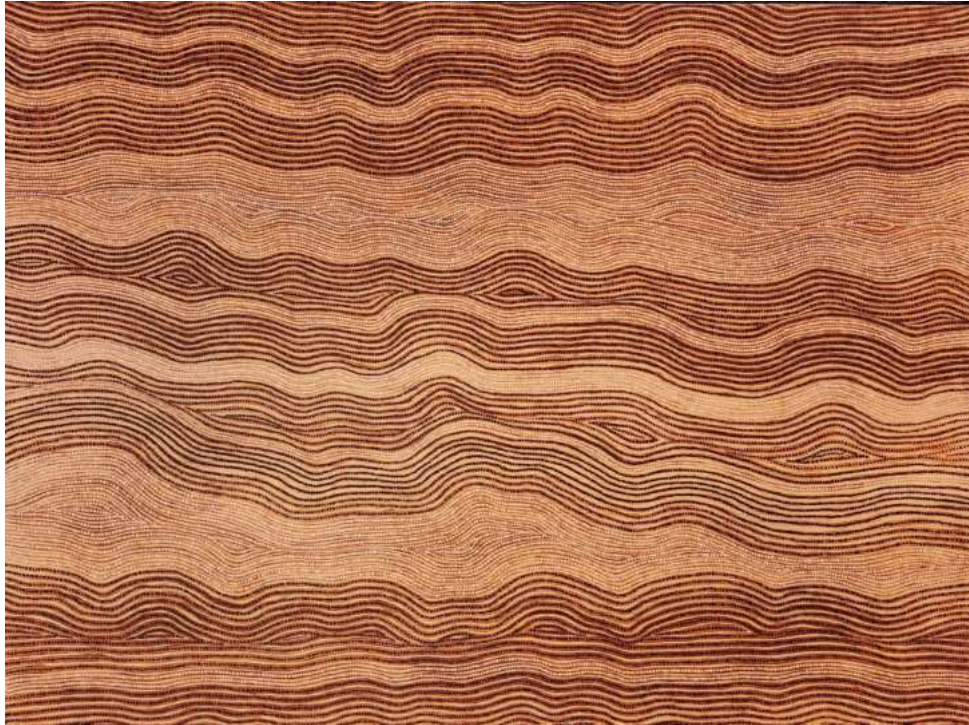


15 FEBRUARY - 23 MARCH 2025
OPENING FRIDAY 14 FEBRUARY, 6PM

GOSFORD
REGIONAL
GALLERY

Dandhi - Grounded

ETHAN-JAMES KOTIAU



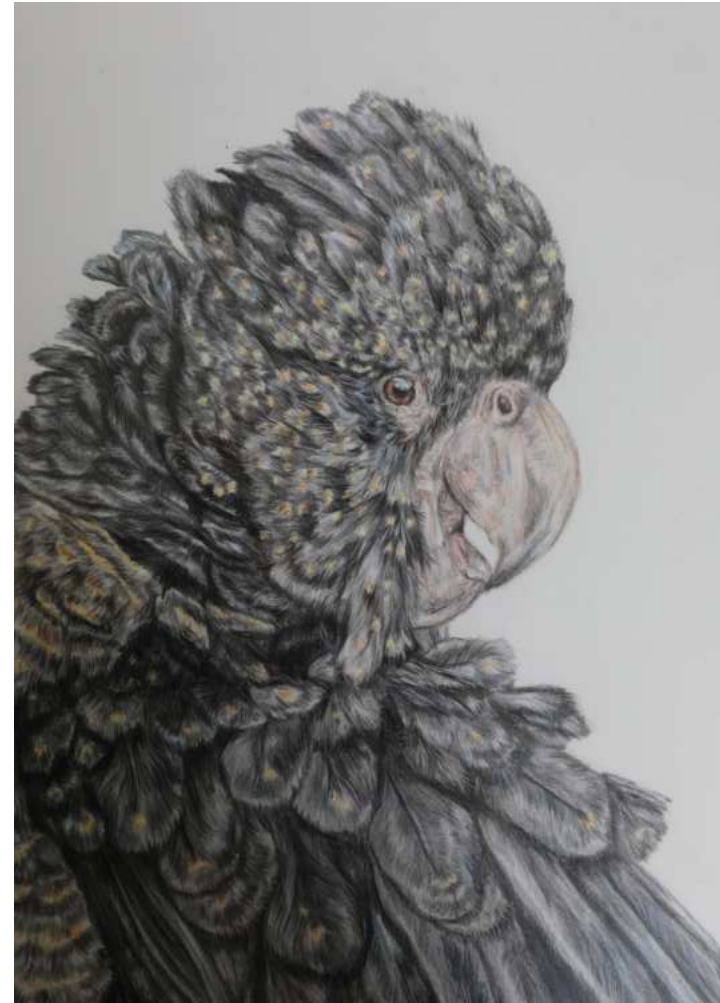
Dandhi means “Grounded” in my language, Gunggari. This exhibition is about being connected to the land, the waterways, and our culture. It’s about remembering where we come from - our roots, our language - and how that gives us strength. When we stay grounded in those things, it’s like building on a solid foundation. We can look ahead, but it’s always with our past in mind. These works reflect that balance between holding onto our traditions and growing from them, showing the positive impact it has on us and the generations to come.

In conjunction with the exhibition Ethan will develop a project with local First Nations students, creating a series of banners which will become part of the gallery’s 25th year celebration.

Image: Ethan-james Kotiau *Dandhi - Grounded*, 2024. Acrylic on canvas, courtesy of the artist

15 FEBRUARY - 23 MARCH 2025
OPENING FRIDAY 14 FEBRUARY, 6PM

A Central Vision 2025



Partnering with the Department of Education, A Central Vision brings together the best artworks from students studying at local Public Secondary High Schools.

This annual exhibition presents the opportunity for selected students to display their artwork in a professional gallery setting, with prizes awarded to a selection of artworks.

Spanning across the Community Gallery and the Foyer gallery spaces, the exhibition features artists from Years 7-12.

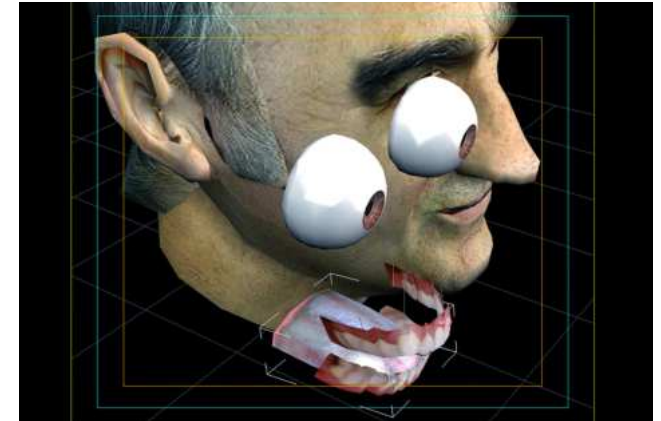
Image: Alisha Sawatske *Australian Animals*, TLSC Berkeley Vale. A Central Vision 2023

1 MARCH - 23 MARCH 2025
OPENING FRIDAY 28 FEBRUARY, 6PM

25 Moments

REIMAGINING TWENTY-FIVE YEARS OF ART

25
YEARS



Drawing on the nearly 500 exhibitions held at the Gosford Regional Gallery since it opened in 2000, *25 Moments* celebrates the vitality and diversity of the Central Coast's much loved gallery.

From the very first exhibition *A Century of Australian Painting* to the 2024 exhibition *Banksia* by Atong Atem, the 25 moments selected to survey the Gallery's history are a blend of nostalgia, a celebration of artistic triumph and an aspiration to take the conversation further.

From internationally recognised to exceptional local artists, this eclectic exhibition is a true celebration of 25 years of art.

Atong Atem
Sharon Aldrick
Madeline Anderson
Richard Bell
Yantra de Vilder
Jon Cattapan
Russell Drysdale
Minka Gillian

Nathalie Gautier-Hartog
Claire Healy and
Sean Cordeiro
Greg Leong
Rod Milgate
nova Milne
Reg Mombassa
Peter O'Doherty

Susan O'Doherty
Lloyd Rees
Luke Shadbolt
Beverly Smith
Stelarc
Angela Valamanesh
Guy Warren
More to be announced

Image: Claire Healy and Sean Cordeiro *The Surgeon's Photo*, 2023, courtesy of Silversalt Photography

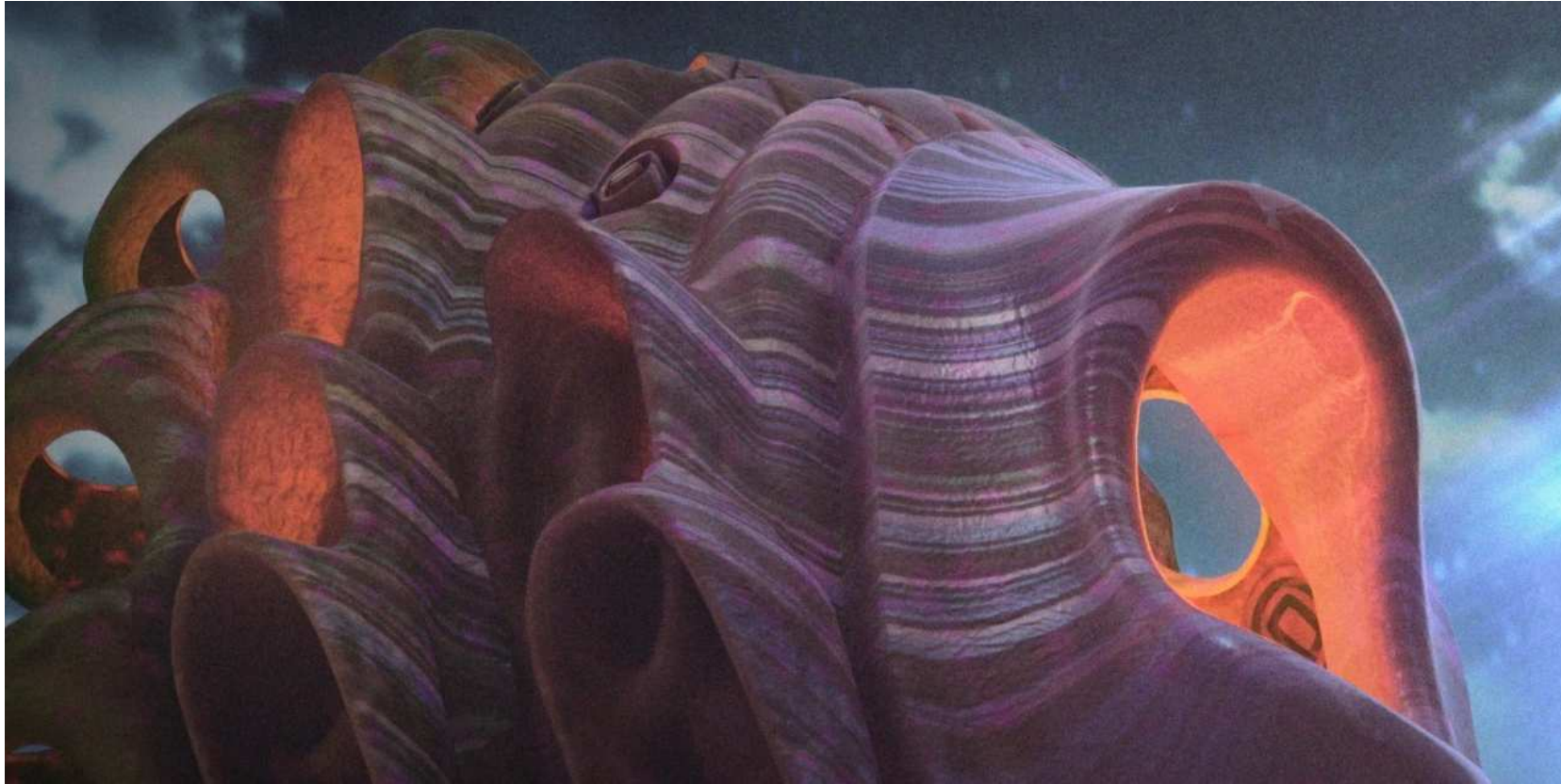
Image: Stelarc *Prosthetic Head*, 2003. Digital image, courtesy of the artist

12 APRIL - 15 JUNE 2025
OPENING FRIDAY 11 APRIL, 6PM

GOSFORD
REGIONAL
GALLERY

Wander and Dwell

JOHN POWER



Wander and Dwell is a real-time generative artwork responding to the natural topographic environment radiating from Gosford and the Central Coast of New South Wales, Australia. The traveller arrives in Gosford and begins a beguiling sensory journey, moving out into the landscape

where rail and road networks wind busily through undulating coastline. Telco towers create their own lines of communication among sighing Norfolk pines. Deep time echoes through stratified colours of sandstone, conjuring apparitions, strange songs, and curious silhouettes which lead

the traveller down forking paths. Through pencilling fern-light, the hinterland rainfall flows into estuarine mangrove stands and across the rippling surface of a lake on its way to the thrumming turquoise surf. Fascinated and buffeted by soaring cliffs, the traveller returns to the embrace of ancient

casuarinas. Apprehension and beauty mingle in a liminal state of aporia - dissonance and paradox - forming a gateway. In time, we arrive at a transcendent state of tranquility.

Emerging 2025

Since 2003, *Emerging* has run as a biennial art award to support early-career artists develop their practice. Entries are open to artists across New South Wales aged 18 to 30. The exhibition of the *Emerging* finalists provides an opportunity for the selected artists to develop and exhibit a new or existing body of work at Gosford Regional Gallery. The prize supports artists who work in non-traditional mediums and a wide range of installation-based practices to present their artwork to a regional gallery audience.

For early career artists, opportunities to gain recognition and experience within a professional gallery setting are essential to building a sustainable and fruitful career in the contemporary arts. *Emerging 2025* is the eleventh time the competition has been held and we are pleased to offer the \$5,000 prize and continue our commitment to provide opportunities for young artists.

Submissions open 6 December 2024 and close on 3 March 2025

Selected submissions announced 17 March 2025

Award announcement and exhibition opening event Friday 27 June 2025



Image: Monica Rani Rudhar *Drop Earrings That Once Belonged To My Mother*, 2022. Terracotta, glaze, lustre, chain, wire. Emerging 2023 winner. Document

28 JUNE - 24 AUGUST 2025

OPENING AWARD ANNOUNCEMENT FRIDAY 27 JUNE, 6PM

Temporal Echoes from Surreal Landscapes

AKSARA HARRIRAM

As a visual interpreter of captivating imaginative spaces, Aksara finds herself inexorably drawn to the raw power and transformative beauty of the inner geological landscapes. These landscapes are shaped by time and elemental forces demonstrating the interplay between humanity's sense of memory and the natural state of the world. She offers up a colourful palette filled with striking resemblances to childhood wonderment displayed in these floating suburbs.



Image: Aksara Harriram *Dwellings - Floating suburb*, 2022. Paper clay, modelling clay, foam-core, wood, acetate and found objects, courtesy of the artist

4 JULY - 27 JULY 2025

OPENING FRIDAY 4 JULY, 6PM

Gosford Art Prize 2025

The *Gosford Art Prize* is an annual award that attracts entries from across Australia. The finalist exhibition and opening night is the biggest event held at the gallery each year. The Prize is open to all Australian artists working in any medium and attracts submissions that show a breadth of artistic excellence and display a diverse array of contemporary techniques and conceptual concerns.

The Prize has been a feature of the Gallery's exhibition program since opening in 2000 and is a cultural highlight of the region.

This year the prize pool has increased to over \$55,000 and presents the selected winner with a prize of \$25,000 in recognition of the 25th anniversary of Gosford Regional Gallery. \$10,000 will be awarded to a First Nations artist and \$10,000 to a Ceramic based artwork. The inaugural Moving Image Art Award, also valued at \$10,000, will be presented to an artist working in any moving digital film/screen based artwork.

Entries open Friday 16 May 2025 and close Monday 30 June 2025 at 4pm.

For further information visit www.gosfordregionalgallery.com



Image: Gosford Art Prize 2024. Image includes paintings by Justin Lees, *St. Patrick's Day Fall*, 2024. Oil on canvas and Mandy Francis, *Rising Through The Mist*, 2024. Oil on canvas. Docqment

6 SEPTEMBER - 9 NOVEMBER 2025
OPENING FRIDAY 5 SEPTEMBER, 6PM

Dear Christians

TODD FULLER



Dear Christians is a new hand-drawn animation by award-winning artist Todd Fuller, centered on the life and work of Reverend Rod Bower of Gosford Anglican Church.

Narrated by Bower himself, the body of work explores his powerful advocacy for LGBTQ rights through his viral church signs, including "DEAR CHRISTIANS, SOME PPL ARE GAY. GET OVER IT. LOVE GOD."

Through animation and drawing, Fuller's exhibition weaves together poignant moments from Bower's life and his impact on diverse communities beyond the church pews of Gosford.

Image: Todd Fuller *Church study* 2024. Watercolour on paper, courtesy of the artist and .M Contemporary

15 NOVEMBER 2025 - 28 FEBRUARY 2026
OPENING FRIDAY 21 NOVEMBER, 6PM

ARCHIBALD PRIZE 2025

The Archibald Prize for portrait painting is Australia's most celebrated and democratic - sometimes controversial - art award. The trustees of the Art Gallery of New South Wales judge the entries and the winner receives \$100,000.

First awarded in 1921, the Archibald Prize was established following a bequest from former Art Gallery trustee and founder of The Bulletin magazine JF Archibald (1856-1919), whose aim was to foster portraiture, support artists and perpetuate the memory of great Australians.

Following their display at the Art Gallery in Sydney, the Archibald Prize 2025 finalist works will tour to venues across NSW offering audiences outside Sydney the opportunity to see these notable works.

This is a ticketed exhibition,
Entry \$10, Concession \$5, Members free.
Thursday nights with Archie, every Thursday except on public holidays,
See our website for more details. www.gosfordregionalgallery.com

An Art Gallery of
New South Wales
touring exhibition

Art
Gallery
NSW

22 NOVEMBER - 31 DECEMBER 2025
OPENING FRIDAY 21 NOVEMBER, 6PM

GOSFORD
REGIONAL
GALLERY

Community Gallery Program

Exhibition	Duration
AboutFace	15 December -15 January 2025
Central Coast Art Society	17 January - 29 January
Homage - Norman Haskell	31 January - 16 February
A Central Vision	18 February - 31 March
Futurescapes	2 April - 30 April
Surf and Turf - Central Coast Potters Society	2 May - 7 May
Being in Time and Place	9 May - 21 May
Darkinjung Colours of Country	23 May - 28 May
The River	30 May - 9 June
20 x 20 - Home and Away	12 June - 29 June
Now and Then - Marcia Staples	4 July - 13 July
Zineergy	15 July - 6 August
40 Years... and Evolving - Central Coast Watercolour Society	8 August - 20 August
Art Hall 25	22 August - 3 September
Edogawa Garden Alphabet of Plants	5 September - 17 September
Connections - The Makers Studio	19 September - 28 September
Mental Health Artworks	30 September - 13 October
Banarnia - The Crud Muffins	15 October - 29 October
Our World	31 October - 5 November
Studio Gossie	7 November - 19 November
Tribe of New	21 November - 9 December
AboutFace - Young Archie	11 December - 14 January 2026

Please note information and dates are correct at time of printing. Please check the Gallery's website for up-to-date information.

Futurescapes 2025

**RYAN ANDREW LEE, EDEN PAYNE,
EMMA PINSENT AND JESSICA SMITH**

The program *Futurescapes* gathers young multidisciplinary artists who speculate sustainable ways of relating to the world.

The exhibition and accompanying workshops foster an interactive ecology in which to imagine a future of diverse being, knowing and co-existence.

Futurescapes is curated by emerging practitioner Anna-Francesca Seymour and is showcasing in The Community Gallery.



Image: Jessica Smith *Entwinings: cascade*, 2022. Glazed earthenware, wood. Silversalt Photography

FRIDAY 4 APRIL - 30 APRIL 2025
OPENING FRIDAY 4 APRIL, 6PM

Further information

Visit us

36 Webb St, East Gosford, New South Wales, 2250
Open 9:30am - 4pm daily. The gallery is open all year round with the exception of Christmas Day, Boxing Day, New Year's Day and Good Friday.

General entry is free. An additional charge will apply for the Archibald Prize exhibition.

Getting here

Gosford Regional Gallery is located just over two kilometres from Gosford train station. Multiple bus routes (including routes 19, 20, 22, 44, 63 and 64) run between the train station and Erina Fair interchange. Ask the driver to set you down at the Elanora Hotel in East Gosford, then walk approximately seven minutes south down Adelaide Street to the gallery.

Free parking onsite including bus parking. Gosford Regional Gallery is an accessible venue.

Art classes and school holiday workshop programs

We host both one-off and regular term art classes. These are designed to engage the budding inner artist in an informal and friendly environment, with classes accommodating artists of all ages and abilities. Our school holiday workshop programs are run by practicing artists and educators and designed for kids aged 6-16 years. We also offer excursions which can be tailored to your needs including exhibition tours and workshops.

Support us by becoming a member

Our Membership scheme is designed to give you more access and great discounts at the Gallery. Receive special access to events, as well as discounts in the shop and for our art class program. You'll be actively supporting the Gallery to develop stronger exhibitions and cultural events, with 100% of the money going back into programs at the Gallery.

GRG Shop

The GRG shop has a focus on showcasing the work of Central Coast artists, designers and makers. The shop offers a wide variety of specialist art and design books as well as titles that relate to the Japanese Garden and the gallery's exhibition program. There is a unique selection of gifts and cards, plus handmade objects, jewellery, ceramics and glass. The merchandise is constantly changing with new curated collections developed with each exhibition. Visit us today!

Get involved

We have many volunteer positions available at the Gallery, including greeting visitors at our front desk, helping out in the gift shop, assisting with events, tour guiding or assisting with educational programs.

Tours

We can help you organise your group visit, including guided tours of our latest exhibition or the serene Edogawa Commemorative Garden. There is free bus parking on site and access to picnic areas and barbeques in the surrounding parklands. We recommend you allow approximately two hours to tour the gallery and garden.

We offer free tours most Saturdays commencing with the Gallery at 11am and the Garden at 11.30am



Edogawa Commemorative Garden

The Edogawa Commemorative Garden is a beautiful peaceful space located in the Gosford Regional Gallery precinct. Gosford formed a Sister City Agreement with Edogawa, Japan in 1988. A gift from Edogawa, the Garden was officially opened in September 1994 and has been designed in accordance with the original principles of the Japanese Heian period (700AD).

Extending over 4,000m², the garden is based on a traditional 'shuyu' (strolling style) garden, incorporating Japanese features. With meandering pathways, a roofed Japanese pavilion overlooking the Koi pond, raked dry stone garden and traditional Japanese teahouse, the garden offers a tranquil setting in which to relax and enjoy art and nature.

The roofed pavilion overlooking the Koi pond is a popular choice for wedding ceremonies, and children love feeding the fish from the ornamental bridge. Bags of fish food are available from the gallery shop. Guided tours of the garden for groups and organisations can be arranged.

The garden is open daily and entry is free.

Images: Top: Docqment, 2023. Bottom: Tomoko Oka, Wolfe Wise Creative, 2022



Gosford
Regional
Gallery

**Gosford Regional Gallery &
Edogawa Commemorative Garden**

36 Webb Street, East Gosford,
New South Wales, 2250

www.gosfordregionalgallery.com
gallery@centralcoast.nsw.gov.au

02 4304 7550

Open 9:30am - 4pm daily

The gallery is open all year round with the exception of Christmas Day, Boxing Day, New Year's Day and Good Friday.